

Tuesday, 7 May 2019

Hines acquires ABC Westland logistics park (NL)



Hines (<https://www.hines.com/>) has acquired **ABC Westland** (<https://www.abcwestland.nl/nl/>) freehold logistics park, located in close proximity to The Hague, the Netherlands. The asset incorporates both a range of 13 existing buildings and land for potential future development. The experienced incumbent management team will remain in place to continue to provide an excellent service to the diverse range of tenants on the park.

The property encompasses 117,000m² of logistics warehouse and commercial office space. The roofs of the logistics business premises are equipped with 18,285 solar panels, which supply approximately 30% of the current energy consumption in the park. With an established reputation as one of Europe's largest logistics hub for food and fresh produce, ABC Westland is home to over 50 food companies and suppliers. This includes commercial enterprises, wholesalers, processing companies, logistical service providers and packing companies handling produce such as fruit and vegetables and floriculture.

ABC Westland is located in the middle of the Westland region, an international growing area and agri-food cluster. It is acknowledged for its logistics trade, research and development and the world's largest greenhouse area. Moreover, the park sits between the Port of Rotterdam and The Hague.

"ABC Westland fits perfectly into our global portfolio and its strategic location close to the Port of Rotterdam has enabled the site to become Europe's leading food logistics hub, serving markets across the region," said Lars Huber, CEO of Hines Europe. *"The fresh produce and food park have massive*

growth potential.”

Sherri Schugart, chief executive officer of Hines Global Income Trust, added: “Hines Global Income Trust is excited about expanding our presence in the Dutch warehouse market with this strategic acquisition. ABC Westland represents a vital logistics hub in the heart of the Westland with immediate access to the port of Rotterdam and plays an essential role in the global food distribution supply chain.”

Andy Smith, managing director and head of Hines Netherlands, said: “Hines Netherlands is pleased to add to our logistics portfolio in the Netherlands and will continue to look for exceptional opportunities to broaden our investment depth and breadth in the sector together with our growing team of specialist local professionals.”



(https://www.europe-re.com/news/hines-acquires-abc-westland-logistics-park-nl/66501) /share?u=https://www.europe-re.com/news/hines-acquires-abc-westland-logistics-park-nl/66501&url=https://europe-re.com/news/hines-acquires-abc-westland-logistics-park-nl/66501

Related News

Fortress starts on Zabrze logistics park (PL) (/fortress-starts-on-zabrze-logistics-park-pl/71844)

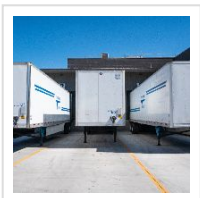


(/fortress-starts-on-zabrze-logistics-park-pl/71844)

Fortress Real Estate Investments has commenced with the development of Fortress Logistics Park Zabrze with a target GLA of 77,500m². The company has secured its first ...

(/fortress-starts-on-zabrze-logistics-park-pl/71844)

King Street and Bowery launch European logistics JV (/king-street-and-bowery-launch-european-logistics-jv/71838)



(/king-street-and-bowery-launch-european-logistics-jv/71838)

King Street Capital Management and Bowery have expanded their portfolio of last-mile urban logistics assets through Voyage, their joint venture. The recently launched platfo ...

(/king-street-and-bowery-launch-european-logistics-jv/71838)

Aviva Investors acquire French logistics portfolio (/aviva-investors-acquire-french-logistics-portfolio/71837)



(/aviva-investors-acquire-french-logistics-portfolio/71837)



Aviva Investorshas acquired a portfolio of three logistics facilities spread across the Orlaans, Nantes, and Reims regions of France, through a forward funding agreement ... (/aviva-investors-acquire-french-logistics-portfolio/71837)

Savills IM and Vestas sell Dutch industrial hub for €105m (/savills-im-and-vestas-sell-dutch-industrial-hub-for-105m/71836)



(/savills-im-and-vestas-sell-dutch-industrial-hub-for-105m/71836)

Savills Investment Managementhas completed the sale of DSV Venlo, a core logistics asset in the main logistics hub in The Netherlands. The transaction was completed on be ...

(/savills-im-and-vestas-sell-dutch-industrial-hub-for-105m/71836)

Panattoni starts on Brighton logistics development (GB) (/panattoni-starts-on-brighton-logistics-development-gb/71835)



(/panattoni-starts-on-brighton-logistics-development-gb/71835)

Panattonihas begun speculatively developing a 268,063ft² last-mile logistics development at Brighton. Panattoni Park Brighton will comprise seven units, ranging fro ... (/panattoni-starts-on-brighton-logistics-development-gb/71835)

Panattoni to extend Wroclaw Campus (PL) (/panattoni-to-extend-wroclaw-campus-pl/71830)



(/panattoni-to-extend-wroclaw-campus-pl/71830)

Panattonihas launched construction work on Wroclaw Campus – its largest project in Lower Silesia – where it has already delivered 185,000m². The developpe ... (/panattoni-to-extend-wroclaw-campus-pl/71830)

CTP secures Bremen logistics project (DE) (/ctp-secures-bremen-logistics-project-de/71829)



(/ctp-secures-bremen-logistics-project-de/71829)

CTP Germanyhas started developing its first new construction project in Germany. CTP has acquired a brownfield site with over 59,600m² to the southeast of Bremen. Th ... (/ctp-secures-bremen-logistics-project-de/71829)



Chancerygate completes six urban logistics developments (GB) (/chancerygate-completes-six-urban-logistics-developments-gb/71827)



(/chancerygate-completes-six-urban-logistics-developments-gb/71827)

Chancerygate has achieved practical completion on six new Grade A urban logistics developments totalling 687,000ft² which have a combined gross development value (GDV) ... (/chancerygate-completes-six-urban-logistics-developments-gb/71827)

LATEST NEWS (/CATEGORY/NEWS)



CBRE IM acquires two resi assets in Madrid (ES) (/cbre-im-acquires-two-resi-assets-in-madrid-es/71921)

Friday, 21 July

RESIDENTIAL



Coop Alleanza 3.0 sells €50m real estate portfolio (IT) (/coop-alleanza-3-0-sells-50m-real-estate-portfolio-it/71925)

Friday, 21 July

RETAIL



Sellar gets green light student on student housing project (GB) (/sellar-gets-green-light-student-on-student-housing-project-gb/71924)

Friday, 21 July

STUDENT HOUSING



Richmond Council approves €1.2b Stag Brewery scheme (GB) (/richmond-council-approves-1-2b-stag-brewery-scheme-gb/71923)

Friday, 21 July

MIXED USE



Hilton partners Andras House for new hotel in Portrush (GB) (/hilton-partners-andras-house-for-new-hotel-in-portrush-gb/71922)

Friday, 21 July

HOSPITALITY



Morgan Sindall to build €29m diagnostic centre (GB) (/morgan-sindall-to-build-29m-diagnostic-centre-gb/71916)

Thursday, 20 July

HEALTHCARE

[➔ MORE NEWS \(/category/news\)](#)

[Cookie Policy \(/category/legal/cookie-policy\)](#) [Partners \(/category/about/partners\)](#)
[Sponsors \(/category/about/sponsors\)](#)